

CHAR DHAM YATRA BY HELICOPTER





PACKAGE INCLUSIONS

- Helicopter flying from Dehradun to Char Dham and back.
- Pickup and drop from Dehradun airport/railway station and stay in Dehradun on the arrival date.
- Accommodations at all four Dhams with all meals inclusive.
- Provincial sightseeing at all four destinations.
- All local transport by Innova/Similar.
- Personalized VIP darshans at all Dham's.
- Our representative will take you for the darshans.
- Best hotels throughout the tour.
- Palki and Pony at Yamunotri- as per the availability.
- Special care for Senior Citizens during the tour.
- Tour travel our own using fleet of VT-UHE & VT-HEX Helicopter.
- Shri Kedarnath ji helicopter shuttle services: Phata-Kedar-Phata.



Travel ITINERARY



DAY 1 - ARRIVAL AT DEHRADUN



- Dehradun is our main base (starting and ending point) for our Heli-tour.
- The tour will start with your arrival at Airport/Railway Station. On arrival you will meet our representative and will be escorted to your pre-booked hotel.
- Passengers should aim to be in Dehradun to begin their Char Dham tour.
- In the evening, our team will update the yatriis about the tour and provide them duffel bags for packing only the essentials.

DAY 2 - DEHRADUN TO YAMUNOTRI DHAM



- The travel starts with a check-out from hotel, after breakfast.
- Briefing by pilots and ground staff.
- Departure from Dehradun to Kharsali Heli Base (Yamunotri).
- On arrival Passengers will be taken for darshan as soon as possible to avoid yatra rush,
- Trek to Yamunotri temple starts from Kharsali,
- Palki/Pony will be provided from Kharsali to Yamunotri.
- Darshan takes around 5-6 hours.
- Sightseeing at Kharsali: Shani Temple, Jankichatti (Hot water Springs)
- Rest and relax at the cottages.

DAY 3 - YAMUNOTRI TO GANGOTRI DHAM



- After breakfast, passengers will check-out from the hotel.
- Arrival at Harsil helipad.
- Harsil – The second destination of our tour, also known for the abundant apple orchards there, is the most scenic and beautiful destination of this tour.
- Upon arrival Passengers will be taken to Gangotri Dham Darshan.
- Approximate time taken for Gangotri Temple Darshan: 4 hours approx. The road distance to Gangotri temple is approx. 25km, which is roughly an hour drive.
- Sightseeing at Harsil: Bagodi Village/Ancient Hindu temple.





DAY 4- GANGOTRI TO KEDARNATH DHAM

- After breakfast, passengers will check-out from hotel.
- Arrival at Phata Heli-base.
- Phata is the base camp for Kedarnath.
- Accommodation is arranged at the Resort based on Phata helipad itself,
- Passengers will be ferried to Kedarnath Dham for darshan in a shuttle services flight (08 minutes flight).
- Passengers might be ferried in different shuttle services flights, in view of the maximum weight carrying capacity of the aircraft at a high-altitude destination such as Kedarnath.
- Approximate time taken for Kedarnath Temple
- Darshan: 02 Hours.



DAY 5- KEDARNATH TO BADRINATH DHAM

- Passengers will check-out early in the morning.
- Arrival at Badrinath.
- Passengers will first check-in to the hotel and have breakfast. Darshan and sightseeing will be done afterwards. (Temple remains closed from 12-3 in afternoon)
- Approximate time taken for Badrinath Temple
- Darshan: 02 Hours. Passengers will be taken from hotel to the temple by car.
- Sightseeing at Badrinath: Mana Village also known as
- "Last village of India" due to its proximity to the China border.



DAY 6- BADRINATH TO SAHASTRADHARA

- Passengers will checkout from Badrinath hotel after breakfast.
- Enjoy the gorgeous view of the Region particularly the picturesque vista of the confluences; that's a beauty worth looking for nature enthusiasts.
- Arrival on Sahastradhara helipad Dehradun.
- Our team will receive the passengers and escort to their hotels to collect their luggage.
- Later they'll be dropped to airport/railway station, wherein we bid farewell to them.





- We strongly urge our travelers to have one or two more days handy, in addition to the 4 Night 5 Days timeframe, to prevent inconvenience if they get delayed at any location due to adverse weather or unforeseen circumstances.
- All time and schedule mentioned are tentative, in order to understand Char Dham flying routine. It can be rescheduled as per condition prevailing at time of flying.



NOTE*

The timings in the itinerary are subject to change as per weather conditions and fleet availability. It is recommended to seek confirmation from our travel expert before flying.

HOTELS*

DEHRADUN: FAIRFIELD BY MARRIOTT/ SIMILAR
KHARSALI: LA ARKJA PREMIUM VILLA / SIMILAR
HARSIL: HARSIL COTTAGES / SIMILAR
PHATA: KEDAR PARADISE RESORTS/ SIMILAR
BADRINATH: LORDS PALACE/ SIMILAR





THE NET ALL INCLUSIVE COST FOR THIS TRIP IS ✨

RS 2,25,000/- PER PERSON

TERMS & CONDITIONS

Char Dham / Do Dham / Ek Dham Heli-tours are booked as per desired departure date ex-Dehradun / Haridwar, however, passengers are advised to arrive one day prior to the yatra date to be on time and get all briefing done prior journey. A complimentary one-night stay with Dinner at Dehradun is provided on the arrival date and the helicopter tour commences on day 02 from Dehradun. We strongly advise pilgrims to keep one reserve day after the completion of the yatra to cater for any lost day during the yatra owing to bad weather etc.

• Flight Timings

This is a daily fixed departure helicopter tour and all departure timings for each destination are pre-planned. Therefore, passengers must ensure to leave the hotel as per the scheduled estimated time of departure each day of the tour, or else the delayed or No show shall be treated as cancelled without any refund.

• Helicopter & VIP Restrictions

Helicopters flying pilgrims in the Char Dham sector are mainly single-engine machines and the maximum seating capacity is 06 passengers + 01 pilot. Single-engine helicopters are debarred from flying the following VIP as per DGCA SOP (Standard Operating Procedures).

- Speaker Lok Sabha
- Dy. Chairperson Rajya Sabha
- Central Ministers of Cabinet Rank
- CJ I Supreme Court
- Governors of State
- Chief Ministers of State
- SPG Protected - Z category only
- State Ministers of Cabinet Rank
- Helicopter Weight Limitation

The maximum weight capacity of the helicopter is 440 kgs (excluding baggage weight).

Passengers are taken on board depending upon the load, weather, temperature conditions, etc and the pilots call will be final. The total weight of all passengers on board must be within limit. Hence, passengers are required to provide us with their exact weights with heavy clothes at the time of booking to shuffle passengers between helicopters to maintain the right weight of the helicopter for safe flying.





- **Baggage Allowances**

Only one baggage weighing a maximum of 5 kg is allowed per passenger. Guests are not permitted to carry suitcases or any other bags in the helicopter due to size constraints of boot space in a helicopter. Therefore, only duffle/handbags are to be carried on/the tour. In view of helicopters' limited weight-carrying capacity, operators reserve the right to shuffle passengers between helicopters to manage the right weight for safe flying in the hills.

Therefore, passengers traveling together may not be accommodated in the same helicopter flight at times.

- **Flight Safety & Discipline**

The operator reserves the legal right to deboard passengers, who are unruly, abusive, intoxicated, sick, mentally unfit or whose boarding is deemed unsafe for the flight. No refund shall be applicable to such passengers).

- **Extra Weight**

Perfect load factor is always maintained by helicopters while flying over mountains for safety reasons and is more adhered to commercial flying. 75 kgs per passenger is the prescribed average weight of a passenger along with their handbags while flying within a group of 06 or fewer.

- Passengers weighing above 75 Kgs will be charged **Rs 2500** per Kg.
- We confirm the full helicopter booking only after receiving weights from passengers and by maintaining the weight below **440** kgs per helicopter.
- We shall enforce deboarding of passenger/s without any refund if actual weight exceeds much beyond the weights conveyed during booking or shall be allowed boarding after paying applicable extra weight charges. In such excess weight scenarios, the final call shall be of the helicopter pilot.
- From Phata to Kedarnath, the passengers will be divided in different helicopters depending on the weight and balance of helicopter. The passengers will be requested to maintain the same arrangement till the end of the trip for all safety reasons.
- Passengers travelling together may not travel in the same helicopter flight during Phata to Kedarnath. So, there will be a gap of duration between the helicopters.



Note: *Guests are strongly advised to disclose the accurate body weight with clothes / shoes / handbags on at the time of booking and any major variation might lead to the unfortunate deboarding of such passenger without any refund. The Pilot & the operation crew of the aviation crew shall have the final call on the same.





• Single Person Supplement

The pilgrims are charged per seat basis on a double/twin accommodation sharing basis at all destinations and the separate single occupancy room if any, shall be chargeable @ INR 50,000/- per person for Char Dham 4 Nights / 5 Days (Tax Inclusive) & @ INR 25,000/- per Person for Do Dham 3 Nights / 4 Days (tax inclusive) over & above the package cost.

• Infant / Senior Citizen Policy

Children below 02 years are treated as infants and are accommodated free of charge along with guardians. For verification of the age of the child, ID proof/birth certificate shall be checked before boarding. Children above 02 years flying by helicopters are considered adults as per DGCA SOP and are thus charged at par with an adult. Moreover, there are no provisions for any discount for senior citizens.

• Hotels / Charges

Hotels at all destinations except Dehradun are non-star category but are the best available as of date with all amenities including Western Commode, cozy mattresses & hot running water. The package includes the accommodation in twin/double sharing & meals (Non-Onion Non-Garlic) only for the nights mentioned in the final itinerary and any extension beyond the same due to any reason whatsoever, shall be chargeable to the guests on an actual/ direct basis by the hotel.

- Any extras apart from the meals prescribed in the itinerary will be borne by the passengers directly. Also, the company will not be responsible for any change in the restaurants/hotel by the customer.
- Expenses made towards any new inclusion in the itinerary (in the form of newly added sightseeing destination) not mentioned previously in the original itinerary list will be chargeable on actual basis.

• Land Transfers

Land transfers at Dehradun & Gangotri are by Innova, whereas suitable local cabs are used in Sersi/Phata/Guptkashi (Helicopter bases of Kedarnath) & Badrinath.

• Identity Card

Carrying of Aadhar card is a must for an Indian, whereas a passport shall be necessary in the case of foreign nationals & NRI.

• Medication

All temples in the Chardham sector are located at a high altitude of about 10,000 feet and thus the passengers are advised to consult their doctor before commencing the journey and not to forget to carry their personal medication as prescribed.

• Clothing

Guests are advised to carry heavy woolen because the temperature drops drastically during the night. There are no set guidelines for clothing to be worn within temple premises, but the formal clothing should be comfortable & trekking friendly.

• COVID Travel Guidelines

COVID-19 protocols shall be followed by the passengers and the operator as well as per prevailing government guidelines. Boarding can be denied to the passengers without refund if found not adhering to the same.



Payment Terms

- 30 % of the tour package shall be paid in advance to get confirmation of the booking by official mail and Appx 70% is to be paid 30 days prior to the yatra date. The full payment is to be made 15 days prior to the date of yatra ex-Dehradun (or any other helicopter base). Any delay in payment on the due date shall invite the cancellation of the booking without any refund. Passengers shall not be permitted to board or commence the tour unless full & final payment of the tour is made on the due dates.

Cancellation and Refund Policy

- Any moment after booking with an advance 30 % cancellation and 70% refund of total tour cost.
- 30 days or fewer prior to travel date 70% Cancellation and 30% refund of total tour cost.
- 15 days or fewer prior to the travel date 100% cancellation and No refund of total tour cost.
- No show or after commencement of the tour 100% cancellation and No refund of total tour cost.
- **Note:** The cancellation and refund policies are drafted after having carefully catered to the different policies of all aviation companies operating Chardham helicopter tours within Uttarakhand. The cancellation fee is charged to compensate for the loss of seats and revenue due to sudden cancellations resulting in **empty or throw-away cost-priced seats** on the entire tour. Full refund minus **15%** of the tour cost (Services and flight management charges) shall only be applicable if the entire tour gets cancelled due to bad weather/International/ National / State emergencies or force majeure reasons.

Rescheduling

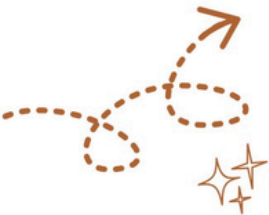
- Request for replacing passenger or rescheduling the booking shall be entertained subject to suitability of body weight and the availability of seats but only after payment of 20% extra of the tour cost. No refund shall be applicable if the request for rescheduling/replacing is not processed owing to different reasons within 24 Hrs from its first official notification and the pilgrims don't wish to fly on previously reserved dates with original passengers.

Cancellation - COVID-19 / National - State Emergency

- In case passenger(s) test COVID positive or the yatra gets terminated by the government or any National or State emergency is imposed, there shall be no refunds applicable beyond the refund policies mentioned above. However, passengers shall be provided with a credit voucher against the amount (Applicable refund minus service and flight management charges @ 15% of total cost), which shall remain valid for one year from its issuance and can be utilized against any other helicopter tours or charter services by the passengers or any of their friends/relatives.

- **Bad Weather & Force Majeure Disclaimer**

Safe flying in hills is subject to many Force Majeure factors like bad weather, delayed Air Traffic Clearances / Permissions, VVIP movements, valley flying by Indian Air Force (NOTAM), a sudden occurrence of technical snag in aircraft, illness to flying crew or even delayed reporting by the passengers at the helipads.



- In case of postponement or cancellation of flight owing to factors mentioned above, the operator & crew shall reserve the sole right to plan a new itinerary keeping in the mind the safety of the machine & passengers. The guests shall be applicable for a due refund for the unutilized services as per the refund/cancellation policy in such circumstances.
- The new arrivals at Dehradun shall have priority over the layover passengers and they shall fly as scheduled, however, the layover passengers shall have options either to continue with the original tour on the next available date, shift to any other tour being operated or cancel the tour completely adhering cancellation/ refund policy.
- In case guests cannot visit any Dham due to bad weather, the company shall refund proportionate money considering the missed services and helicopter journey. The applicable amount would be refunded through the banking network and that would take some time.

Disputes- Disputes as to legality, interpretation, application, or performance of service or any of its terms and conditions shall be governed by the laws of Dehradun Jurisdiction.



+91 8057004088



charters@pinalholidays.com



www.pinalholidays.com

WE ASSURE YOU OF A SAFE & MEMORABLE PILGRIMAGE!





OUR FLEET



VT-HEX



VT-UHE





PINAL